

Modern Masonry Architectural Line (MMAL)

# Standard Block Innovation by ...



Standard Autoclaved concrete masonry units are used in a wide range of applications and provide strength, durability, fire resistance, sound proofing, energy efficiency, and affordability. Day & Campbell Limited Autoclaved standard grey units conform to the Concrete Masonry Association's standards for hollow load bearing masonry units as well as exceed CSA 165 series 04 specifications. Our Autoclaved masonry units also meet the M classification for the maximum moisture content; they exit our plant with less than 1.5% moisture.

**Also available in Autoclaved lightweight masonry:** Day & Campbell offers premium quality at an economical price. Autoclaved lightweight blocks are up to 35 percent lighter than normal weight concrete blocks of the equivalent thickness. In-place costs are approximately the same as for normal weight concrete masonry as a result of reduced unit laying costs due to the lighter weight and reduced dead loads. Reduced sound transmission, superior fire resistance and thermal performance are additional benefits.

**Recycled Content:** We can add pre-consumer (slag) and post-consumer (crushed cullet) when specified that may contribute points toward the LEED Green Building Rating System®. Our Autoclaving process allows us to use only half the cement of a traditional low pressure cured unit. As low as 5% based off the weight of the mix.

**One-Step Installation:** Standard masonry units provide finished load-bearing or non-load-bearing walls in a single trade, one-step operation. You save time and money.

**Maintenance Free:** Autoclaved standard units are virtually maintenance free.

**Low Life-Cycle Costs:** The Autoclaved standard units will last the sustainable life of your building.

**Easy-to-Clean:** Standard masonry units can be cleaned with a variety of masonry cleaners. Contact Day & Campbell Limited to find an approved cleaner.

**Sealer:** Faceal Oleo HD is the only sealer recommended for our products. The sealer performs in a few different ways, but ultimately everything that it does leads to protection and preservation of your assets value. It is an invisible nanotechnology sealer, meaning that you cannot tell that it has been applied. It is virtually invisible. It does not change the water vapour diffusion characteristics of the substrate (so it remains breathable). It serves as protection against graffiti, water, oil and grease-based contamination. It also helps facilitate the cleaning of and removal of chewing gum, ice and algae. It is also very resistant to mechanical abrasion further protecting the finish. Faceal Oleo HD has very good self-cleaning characteristics for exterior or shower applications. The pollution cannot penetrate the surface so the rain or shower water washes the debris away. Faceal Oleo HD is non-reversible and constitutes a so-called permanent graffiti/pollution protection system. It comes with a 10 year warranty. Contact us for more information.

**Mould and Moisture Resistant:** In typical use, masonry construction prevents growth of toxic mould because: (a) masonry materials do not provide a needed source of food; and (b) masonry wall systems offer defined water management strategies that effectively (i) resist the penetration of moisture both from the interior and exterior, (ii) minimize accumulation and duration of exposure of materials

to moisture, and (iii) facilitate drying. A Canadian research study completed in 2003 showed definitively that wood and gypsum board products are sources of mould: "Under identical conditions conducive to the growth of fungal mould, no mould is produced on clay brick, concrete block and concrete, whereas substrates made of wood and paper products produced measurable amounts."

**Durability:** Structural integrity and durability make Autoclaved standard masonry units the perfect choice for your residential, institutional, commercial or industrial project.

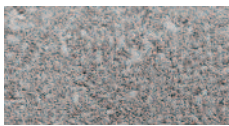
**Fire Protection:** Concrete masonry is a non-combustible material, effectively resisting the passage

of flames, smoke, and heat through its mass. Accordingly, building codes assign high fire ratings to concrete masonry walls, making them superior firewalls for hotels, retirement home, apartments and other structures. These same attributes make concrete masonry desirable for foundation walls and basements to safeguard against the spread of fires and to support the structure above without degradation under extreme heat.

**Over-sized Units:** Units are available in large format sizes.

**Applications:** Interior and exterior

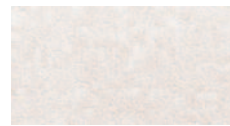
### ***Day & Campbell Modern Masonry Standard Stone Colour Options ...***



Concrete #000



Cameo White #200



Super White #201



Antique Sterling #303



Escarpment Grey #304



Charcoal #305



Canola #302



Bamboo #202



Tan #406



Wheat #704



Chamois #510



Dark Chamois #511



Salmon #509



Rose #612



Sunrise #613



Dark Red #614



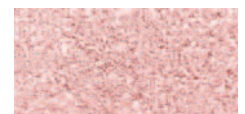
Sandy Brown #407



Rocky Brown #408



Algonquin Crystal #801



Georgian Crystal #802